

Memory Module Specifications

KSM56R46BD4-64HA

64GB 2Rx4 8G x 80-Bit

PC5-5600 CL46 Registered EC8 288-Pin DIMM

DESCRIPTION

Kingston's KSM56R46BD4-64HA is a 8G x 80-bit (64GB) DDR5-5600 CL46 SDRAM (Synchronous DRAM), 2Rx4, ECC, memory module, based on forty 4G x 4-bit FBGA components. The SPD is programmed to JEDEC standard latency DDR5-5600 timing of 46-45-45 at 1.1V. Each 288-pin DIMM uses gold contact fingers. The electrical and mechanical specifications are as follows:

FEATURES

- Power Supply: VDD = 1.1V Typical
- VDDQ = 1.1V Typical
- VPP = 1.8V Typical
- VDDSPD = 1.8V to 2.0V
- On-Die ECC
- x80 ECC (x40, 2 independent I/O sub channels)
- 32 internal banks
- Hard/Soft Post Package Repair
- Sideband access with I3C/I2C
- PCB: Height 1.23" (31.25mm)
- RoHS Compliant and Halogen-Free

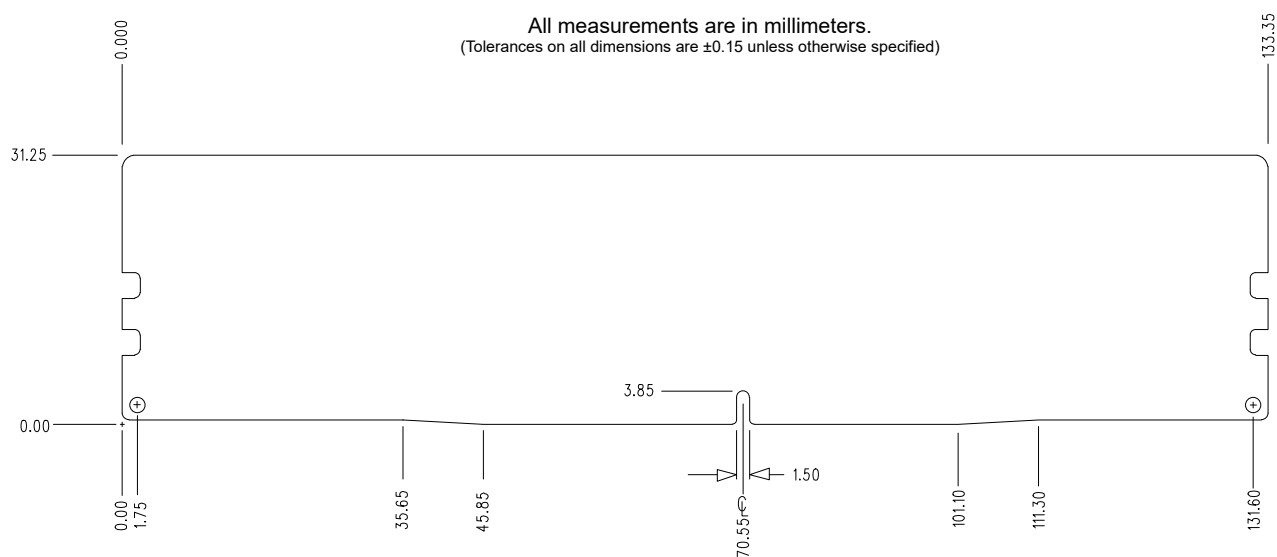
SPECIFICATIONS

CL(IDD)	46 cycles
Row Cycle Time (tRCmin)	48ns(min.)
Refresh to Active/Refresh Command Time (tRFCmin)	295ns(min.)
Row Active Time (tRASmin)	32ns(min.)
Row Precharge Time (tRPmin)	16ns(min.)
UL Rating	94 V - 0
Operating Temperature	0° C to +95° C
Storage Temperature	-55° C to +100° C

Module Assembly

DRAM: Hynix (A-DIE)

Continued >>



Document No. 4811423A 03/21/24 Page 2