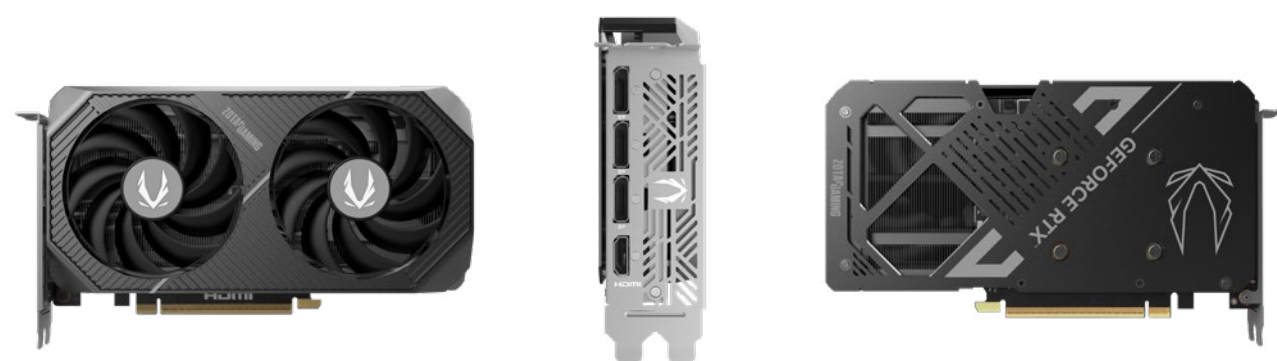




ZOTAC GAMING GeForce RTX 5060 Ti 16GB Twin Edge

SKU: ZT-B50620E-10M | EAN: 8886307700612 | UPC: 810012085649

The ZOTAC GAMING GeForce RTX 5060 Ti 16GB Twin Edge is a compact graphics card powered by NVIDIA's cutting edge Blackwell Architecture, DLSS4 and 16GB of GDDR7 memory. With a solid cooling solution, the Twin Edge is ready to take on the latest title releases with smooth framerates and performance.



KEY FEATURES

- NVIDIA Blackwell Architecture
- 5th Generation Tensor cores
- 4th Generation RT cores
- NVIDIA DLSS 4
- Game Ready and NVIDIA Studio Drivers
- NVIDIA® GeForce Experience™
- NVIDIA Broadcast, NVIDIA G-SYNC®
- 16GB GDDR7 graphics memory
- IceStorm 2.0 advanced cooling
- FREEZE fan stop
- Dual 90mm BladeLink Fans
- Metal backplate
- ZOTAC GAMING FireStorm Utility
- Side Retention Mount for secure transport
- SFF-Ready compact footprint



TECHNICAL SPECIFICATIONS

SPECIFICATIONS

- NVIDIA GeForce RTX 5060 Ti GPU
- 4608 CUDA cores
- 16GB GDDR7 memory
- 128-bit memory bus
- Engine boost clock: 2572 MHz
- Memory clock: 28 Gbps
- PCI Express 5.0 x8

SOFTWARE COMPATIBILITY

- Game Ready and NVIDIA Studio Drivers
- PCI Express® Gen 5
- Microsoft DirectX® 12 Ultimate
- Vulkan RT APIs, Vulkan 1.4
- OpenGL 4.6
- Windows 11 / Windows 10 64-bit (v1809 November 2018 or later)

CONNECTIONS

- 3 x DisplayPort 2.1b with UHBR20 (up to 4K 480Hz or 8K 165Hz with DSC)
- 1 x HDMI® Connector (Supports 4K 480Hz HDR or 8K 120Hz HDR with DSC, and Gaming VRR as specified in the HDMI 2.1b Specification)
- HDCP 2.3 support
- Up to 4 displays simultaneously

POWER REQUIREMENTS

- 600-watt power supply recommended
- 180-watt max power consumption
- 1 x 8-pin power input

INSIDE THE BOX

- ZOTAC GAMING GeForce RTX 5060 Ti 16GB Twin Edge
- User Manual

DIMENSIONS

Product:

- Length: 220.5 mm (8.7 in)
- Height: 120.25 mm (4.7 in)
- Width: 2 slot (41.6 mm) (1.6 in)

Box:

- Height: 283mm (11.1 in)
- Width: 218mm (8.6 in)
- Depth: 83mm (3.3 in)

©2025 ZOTAC Technology Ltd. All rights reserved. All company and/or product names may be trade names, trademarks and/or registered trademarks of the respective owners with which they are associated. Features, pricing, availability and specifications are subject to change without notice. ZOTAC Technology Limited does not warrant the accuracy, completeness or reliability of information, materials and other items contained on this website or server. No liability is assumed with respect to the use of the information contained herein. When accessing this website, users acknowledge that ZOTAC Technology Limited will not be liable in any event for any damages arising out of the use of this site or any websites linked to it.

©2025 NVIDIA Corporation. NVIDIA, the NVIDIA logo, and GeForce are registered trademarks of NVIDIA Corporation in the U.S. and other countries. All rights reserved.

The terms HDMI, HDMI High-Definition Multimedia Interface, HDMI Trade dress and the HDMI Logos are trademarks or registered trademarks of HDMI Licensing Administrator, Inc..

For more information please visit:

[ZOTAC.COM](https://www.zotac.com)