



Safety instructions



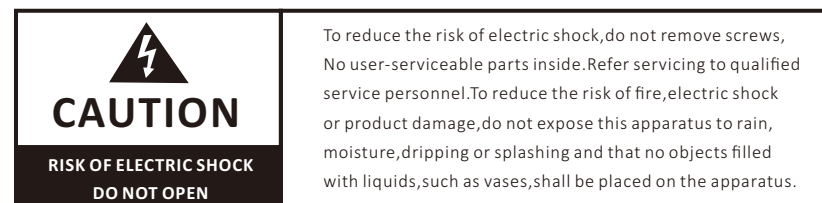
When using this electronic device, basic precautions should always be taken, including the following:

- 1** Read all instructions before using the product.
- 2** Do not use this product near water (e.g., near a bathtub, washbowl, kitchen sink, in a wet basement or near a swimming pool etc).
- 3** Use this device when you are sure that the controller has a stable base and it is fixed securely.
- 4** This product, in combination with loudspeakers and amplifier may be capable of producing sound levels that could cause permanent hearing loss. Do not operate for a long period of time at a high volume level or at a level that is uncomfortable. If you experience any hearing loss or ringing in the ears, you should consult with otorhinolaryngologists.
- 5** The product should be located away from heat sources such as radiators, heat vents, or other devices that produce heat.
- 6** The product should be connected to a power supply that is described in the operating instructions or are marked on the product.
- 7** Before the wiring always unplug equipment's from main power supply.
- 8** The power supply should be undamaged and never share an outlet or extension cord with other devices. Never leave device plugged in the outlet when it is not being used for a long period of time.
- 9** Care should be taken that objects do not fall into liquids and liquids would not be spilled on the device.
- 10** Do not block any ventilation openings. Install in accordance with the manufacturer's instruction.

Safety instructions



- 11** Do not defeat the safety purpose of the polarized or grounding-type plug. A polarized plug has two blades with one wider than the other. A grounding-type plug has two blades and a third grounding prong. The wide blade or the third prong are provided for your safety. If the provide plug does not fit into your outlet, consult an electrician for replacement of the obsolete outlet.
- 12** Protect the power cord from being walked on or pinched particularly at plugs, convenience receptacles, and point where they exit from the apparatus.
- 13** Only use attachments/accessories specified by the manufacturer.
- 14** Unplug this apparatus during lightning storms or when unused for long periods of time.
- 15** The apparatus shall be connected to a main socket output with a protective earthing connection.
- 16** The product should be serviced by qualified service personnel if :
 - The power supply or the plug has been damaged.
 - Objects have fallen into or liquid has been spilled on the product.
 - The product has been exposed to rain.
 - The product has been dropped or the enclosure damaged.
 - The display or main board damaged
- 17** There are some areas with high voltage inside, to reduce the risk of electric shock , do not remove cover of the controller or power supply. The cover should be removed by qualified personnel only.



WEEE Directive



If the time arises to throw away your product, please recycle all possible component.



This symbol indicates that when the end-user wishes to discard this product, it must be sent to separate collection facilities for recovery and recycling. By separating this product from other household-type waste, the volume of waste sent to incinerators or land-fills will be reduced and natural resources will thus be conserved.

The Waste Electrical and Electronic Equipment Directive (WEEE Directive) aims to minimise the impact of electrical and electronic goods on the environment. Gestton comply with the Directive 2012/19/EU of the European Parliament on waste electrical and electronic equipment (WEEE) in order to reduce the amount of WEEE that is being disposed of in land-fill site.

All of our products are marked with the WEEE symbol; this indicates that this product must NOT be disposed of with other waste. Instead it is the user's responsibility to dispose of their waste electrical and electronic equipment by handing it over to an approved reprocessor.

EC Declaration Of Conformity



Manufacturer:

E-C-TONG ELECTRONICS CO., LTD
NO.8-1,DONGFENG ROAD,
NORTHERN SUBURB INDUSTRIAL DISTRICT,
ENPING, GUANGDONG, P.R. CHINA

We, the company E-C-TONG ELECTRONICS CO., LTD declare under our responsibility, that electrical product:

Digital Conference System

Model/type: **EG-6620M**

EG-6620C

EG-6620D

EG-6621C

EG-6621D

EG-6622C

EG-6622D

Are in conformity with the provisions of the following EC Directives:

- Electromagnetic compatibility directive(EMC) – 2014/30/EU
- Low voltage directive(LVD) – 2014/35/EU

The following harmonized standards are applied:

- EN 55013:2013
- EN 55020:2007+A11:2011+A11:2001
- EN 61000-3-2:2006+A1;2009+A2:2009
- EN 61000-3-3:2013
- EN 60065:2002+A1:2006+A11:2008+A2:2010+A12:2011

 WU FENGJIANG

Managing Director of company "E-C-TONG ELECTRONICS CO., LTD"

Guangdong, July, 2021

Before you start

Introduction.....	1
Features.....	1

Product overview

Controller front panel.....	2
Controller rear panel.....	2
Chairman unit.....	3
Delegate unit.....	3
System connection diagram.....	4

Operation

Controller system interface.....	5
----------------------------------	---

CONFERENCE CONTROL

Queue mode.....	6
Meet mode.....	7
Meet setup.....	7
Chairman setup.....	8
Control unit.....	8
Volume.....	9

CAMERA TRACKING

Camera tracking.....	10
Camera control.....	10
Setup preset.....	11

RECORDING.....

SYSTEM SETUP.....

QUICKMARK.....

RESTART.....

Web management system

Login page.....	14
-----------------	----

SETUP ADDRESS

Setup all unit.....	14
Certain unit address.....	15

MEETING SETUP

Queue mode.....	15
Speaking qty.....	15
Sound control.....	15
Meeting mode.....	15
Priority setup.....	15
Mute auto off.....	16
Unit timing off.....	16
Sign-in select.....	16
Buzzer mute.....	16
Unit mute.....	16
Line in/out vol.....	16

CAMERA TRACKING

Camera type.....	16
Camera ID.....	16
Host ID.....	16
Unit ID.....	16
Test preset.....	17
View preset.....	17
Delete preset.....	17
Unit light.....	17

UNIT CONTROL.....

UNIT NAME.....

SETUP SYSTEM.....

SYSTEM PASSWORD.....

SPECIFICATIONS.....

EG-6620 is a compact, easy-to-setup, and easy-to-use wired conference system, yet it provides advanced features and exceptional versatility. Embedded with advanced network operation system, configuration and control can be done via built-in web browser, it's an ideal option for innovated design conference venue.

FEATURES

- Digital signal processing
- Embedded management system
- Anti-interference system design
- Built-in USB audio recording
- Voice activation support
- RS-232 controller interface
- Up to 100 discussion microphones
- Intuitive touch operation
- Camera tracking support
- VISCA & PELCOL-D/P camera control
- RS-232 and RS-485 camera control
- Various meeting modes support
- Multiple microphone design option
- Up to 1000 discussion microphones via extension

Product overview

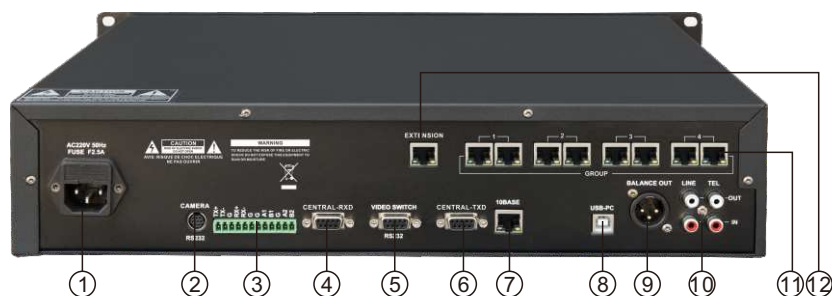


Controller Front Panel



1. USB recording port
2. TFT touch screen
3. Power switch & indicator

Controller Rear Panel



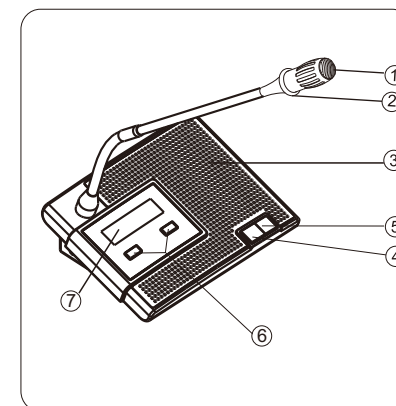
1. AC Power socket & fuse
2. Camera RS-232
3. Camera RS-485/RS-422
4. Controller RS-232 RXD
5. Video switch RS-232
6. Controller RS-232 TXD
7. Ethernet interface
8. PC USB
9. Balanced audio output
10. Line in/out, Tel in/out
11. Microphone interface
12. Extension interface

Product overview

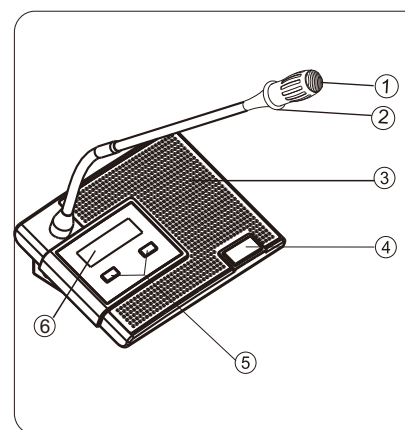


Chairman unit

1. **Condenser microphone capsule**
Detachable design, to pickup audio signal from speaker.
2. **Mic indicator**
To indicate the working status of microphone.
3. **Built-in speaker**
Speech signals from other microphone unit and from controller are output from this speaker.
4. **Priority key**
When this key is pressed, delegate units in use will be switched off.
5. **Mic On/Off key**
6. **Volume control**
The volume control of built-in speaker & headset.
7. **Display**



Delegate unit

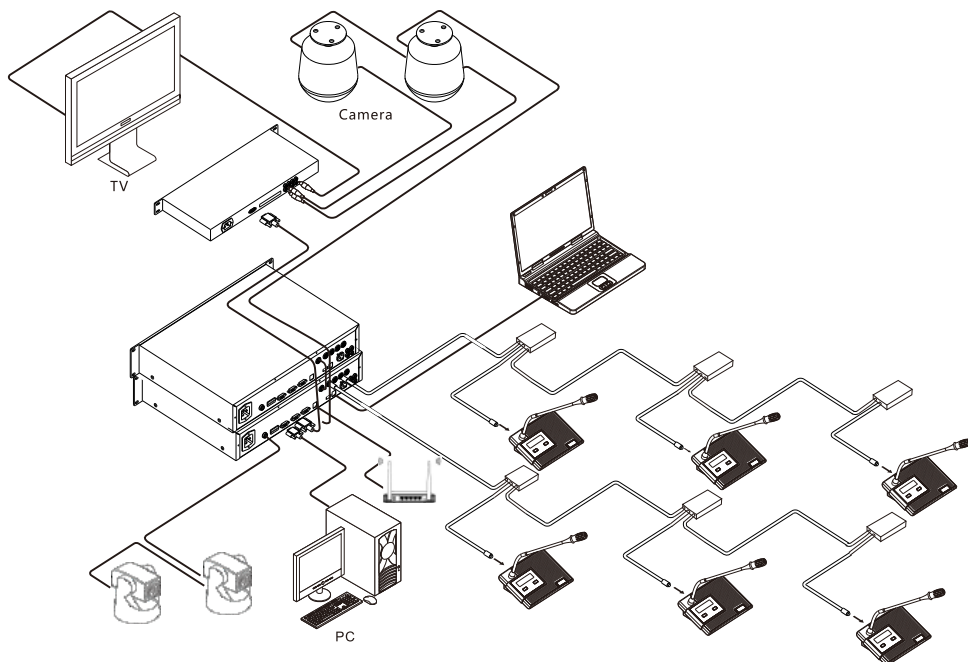


1. **Condenser microphone capsule**
Detachable design, to pickup audio signal from speaker.
2. **Mic indicator**
To indicate the working status of microphone.
3. **Built-in speaker**
Speech signals from other microphone unit and from controller are output from this speaker.
4. **Mic On/Off key**
5. **Volume control**
The volume control of built-in speaker & headset.
6. **Display**

Product overview



System connection diagram



Note:

- Microphone units' ID are set in factory, but users can reset the ID for each microphone after the installation.
- Please ensure the system is running by required power supply.
- Avoid using the system in high humidity environment.
- It is recommended to use the system cable from manufacturer.

Operation



Controller system interface



CONFERENCE CONTROL

The menu includes various parameters setup related to pre-meeting program.

CAMERA TRACKING

Configuration window which allows operator to configure the camera position for each microphone.

RECORDING

The window for audio recording operation.

SYSTEM SETUP

To configure the basic info the system such as : IP add, time, host ID etc.

QUICKMARK

QR code which allows operator to access the web management system easier.

RESTART

To reboot the system.

Conference control – Queue mode



FIFO

First in first out, under certain OPEN MIC qty, this pattern applied to delegate units. For instance, OPEN MIC qty is 2, the 1st active unit will be switched off when 3rd unit switched on.

LIFO

Last in first out, under certain OPEN MIC qty, this pattern applied to delegate units. For instance, OPEN MIC qty is 2, the 2nd active unit will be switched off when 3rd unit switched on.

SOUND CONTROL ON/OFF

To allow delegate to open the microphone unit with voice.

Note: Please adjust SOUND CONTROL (at volume setting menu) at a lower level prior to the activation of SOUND CONTROL function, and to adjust it as needed. High sensitivity level setup could lead to system overload failure sometime, please reboot the controller when system failure happened.

Conference control – Meet mode



DISCUSSION MODE

Camera related setup, camera tracks to the last switched on microphone unit.

AUTO MODE

Camera related setup, camera tracks to microphone unit which received voice signal.

CHAIRMAN MODE

Only chairman unit can be switched on.

ALL ON MODE

All microphone units can be switched on, no limit on OPEN MIC qty.

Conference control – Meet setup



CHAIRMAN QTY

To define the qty of chairman unit.

SPEAKING QTY

Applied to delegate unit only, to define the qty of delegate unit can open.

Operation



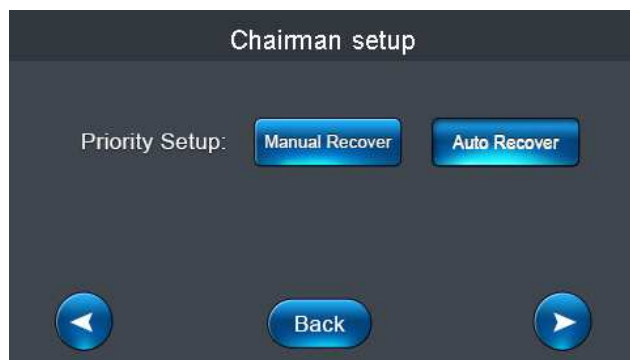
AUTO OFF

To switch off the microphone when no voice signal pickup in set time frame. 0 S means this setup is disable.

TIME OFF

To set the time frame for the microphone unit in active, the unit will be switched off when the time set is up.

Conference control – Chairman setup



MANUAL RECOVER

Delegate units will be switched off when priority key is pressed, delegate unit can open by pressing the ON key again.

AUTO RECOVER

Delegate units will be muted if priority key keeps being pressed, the delegate unit will unmuted when priority key released.

Conference control – Control unit



Operation



ALL UNIT OFF/ON

All microphone units connected will be switched on/off.

CERTAIN UNIT OFF/ON

To switch on/off specific microphone unit by input its ID.

Note: All units can be active when the system set to "ALL ON MODE".

CERTAIN UNIT ADDRESS

To allow user to allocate a specific ID to a microphone unit.
For example: A system consisted 30 mics, when an extra microphone to be included into the system, then user can define this mic's ID as 31 separately.

Note: Should only 1 microphone unit connected to the controller on this operation.
Other microphone units should be disconnected during this operation.

ALL UNIT ADDRESS

To configure the ID of all microphone units connected to the system. User can input the initial ID, and ID will be set in ascending order to each microphone unit till all units assigned, then reboot the controller after the operation.

Conference control – Volume



LINE IN / OUT

To adjust the audio level of input / output.

UNIT LOUDSPEAKER

To adjust volume of speaker of all microphone units.

SOUND CONTROL

To adjust sensitivity of voice activation function.

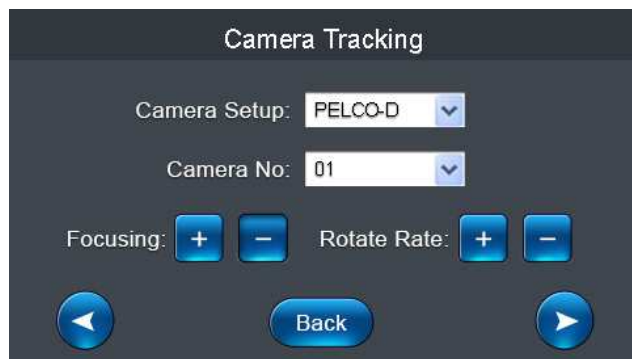
UNIT LOUDSPEAKER MUTE

Speakers on the units will be muted when this is on.

BUZZER MUTE

To enable or disable the buzzer of the controller.

Camera tracking



CAMERA SETUP

Camera protocol: VISCA(SONY-D70)/Pelco-D/Pelco-P (baud rate:9600)/Yaan(baud rate:4800)

CAMERA NO.

Select needed camera for the tracking position setup.

FOCUSING

Camera will adjust it automatically, but user can adjust it manually as needed.

ROTATE RATE

Rotation speed of the camera.

Camera tracking – Camera control



The camera control window allows user to control the movement of selected camera.

Note: The system can support max.6 cameras with video switch, controller will distribute ID to each camera automatically, user should do the manual ID setup for camera if distribution might fail in some cases. And user should follow the boosting order to power on cameras first, then switch on the controller.

Camera tracking – Setup preset



PRESET POINT

Preset point is the unit ID that assigned for the tracking position configuration in the pre-setup stage.

Operation : Operator wanted to put camera configured to track the position of microphone unit no. 1, user should enter number 1 at PRESET POINT then go back to CAMERA TRACKING & CAMERA CONTROL interface to configure the tracking position for unit no.1 and press SAVE PRESET, then the position info of related camera with unit no.1 will be stored. Operator can go back to previous operation interfaces to configure the tracking position for each microphone by the same procedure.

Note: System default preset point is set to 0 as the overview of the meeting room. When no microphone unit is in active, camera will track to the overview position.

TEST PRESET

To allow user to check if the tracking preset configured correctly.

VIEW PRESET

To allow user to check the presets saved.

DELETE PRESET

To delete all the presets saved.

UNIT LIGHT ON/OFF

To lit the indicator on the microphone to assist operator to identify the unit on operation.

FREEZE

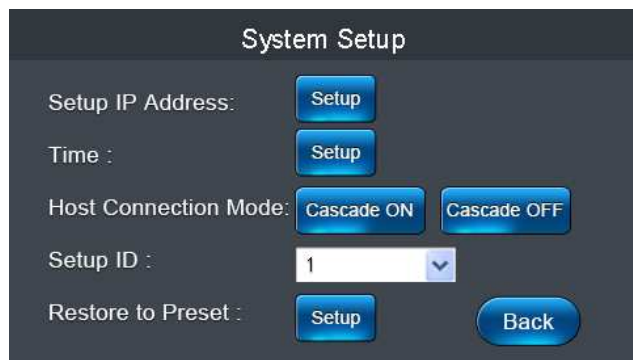
This function enables image freeze during the camera movement.

Recording



System embedded audio recording function, user can record & replay through this window. Support thumb drive capacity in FAT 32G, file format MP2@128Kbps.

System setup



SETUP IP ADDRESS

To define the IP for accessing web management system.

TIME

To configure the system time.

HOST CONNECTION MODE

To enable or disable the extension connection.

SETUP ID

The ID assigned to controller. Each controller should has its unique ID in extension connection.

RESTORE TO PRESET

The system will be restored to factory setting.

QuickMark



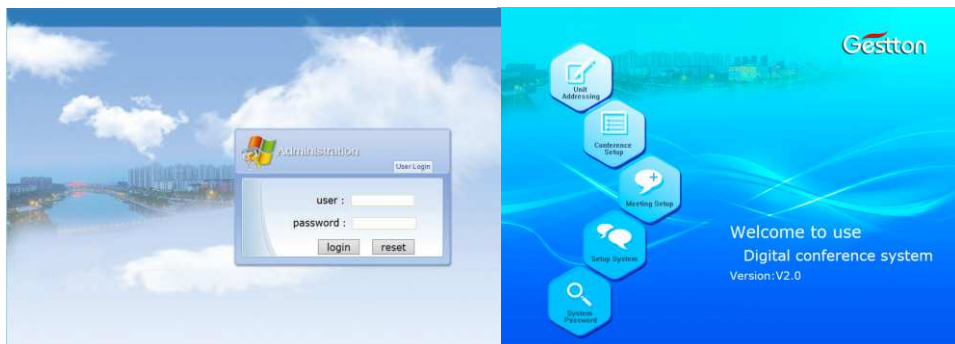
This window allows user to access web management system by scanning the QR code.

Restart



To reboot the system.

Login page

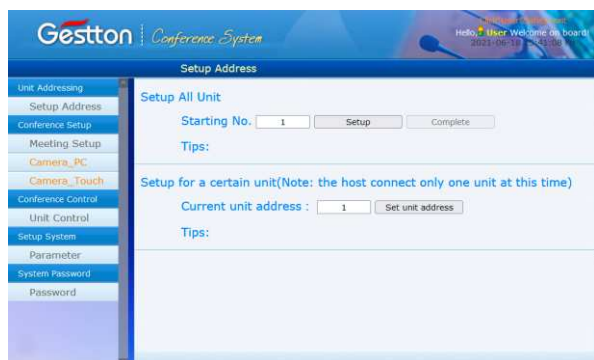


Web management system is the portal to allow operator to configure the system on computer .

The system is embedded in the controller, no software installation required. User should just enter the IP address in the browser to access the system.

IP address of the controller should be set in the same network segment as the computer device in advance, user can check and configure the IP address from SYSTEM SETUP menu on the controller.

Setup address



SETUP ALL UNIT

To configure the ID of all microphone units connected to the system. User can input the initial ID, and ID will be set in ascending order to each microphone unit till all units assigned, then reboot the controller after the operation. Click SETUP to start the process , and COMPLETE to end the process.

CERTAIN UNIT ADDRESS

To allow user to allocate a specific ID to a microphone unit.
For example: A system consisted 30 mics, when an extra microphone to be included into the system, then user can define this mic's ID as 31 separately.

Note: Should only 1 microphone unit connected to the controller on this operation.
Other microphone units should be disconnected during this operation.

Meeting setup



QUEUE MODE

Provide FIFO & FILO options.

SPEAKING QTY

Applied to delegate unit only, to define the qty of delegate unit can open.

SOUND CONTROL ON/OFF

To allow delegate to open the microphone unit with voice.

PRIORITY SETUP

Auto recover- Delegate units will be muted if priority key keeps being pressed, the delegate unit will unmuted when priority key released.
Manual recover- Delegate units will be switched off when priority key is pressed, delegate unit can open by pressing the ON key again.

MEETING MODE

Discussion- camera tracks to the last switched on microphone unit.
Auto- camera tracks to microphone unit which received voice signal.
Chairman- Only chairman unit can be switched on.
All On- All microphone units can be switched on, no limit on OPEN MIC qty.

Web management system



MUTE AUTO OFF

To switch off the microphone when no voice signal pickup in set time frame. 0 S means this setup is disable.

SIGN-IN SELECT (optional)

This option available with system with voting function, user can choose either cardless sign-in or card sign-in, to enable the system to calculate the no. of attendee before the kick-off of voting.

LINE IN/OUT VOL

The main volume control of system.

UNIT TIMING OFF

To set the time frame for the microphone unit in active, the unit will be switched off when the time set is up.

BUZZER MUTE

To enable or disable the buzzer of the controller.

UNIT MUTE

Speakers on the units will be muted when this is on.

Camera tracking



CAMERA_PC & CAMERA_TOUCH are offering the same camera setting function, but Camera_Touch version is optimized for mobile devices user, it has touch release time (**BUTTON TIME**) adjustment option, user may choose it to operate as needed .

CAMERA TYPE

Camera protocol: VISCA(SONY-D70)/Pelco-D/
Pelco-P (baud rate:9600)/Yaan(baud rate:4800)

HOST ID

The controller ID in the camera setup

CAMERA ID

Select needed camera for the tracking position setup.

UNIT ID

The microphone unit that needed to configure camera tracking setup.

Web management system



TEST PRESET

To allow user to check if the tracking preset configured correctly.

DELETE PRESET

To delete all the presets saved.

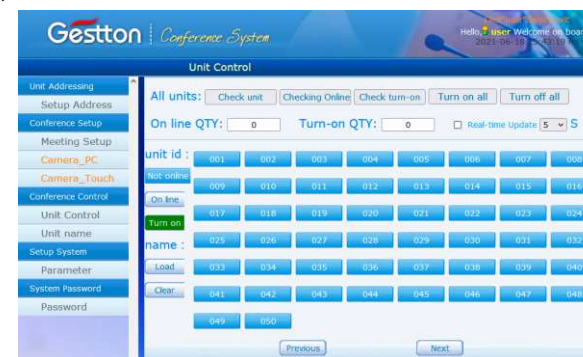
VIEW PRESET

To allow user to check the presets saved.

UNIT LIGHT ON/OFF

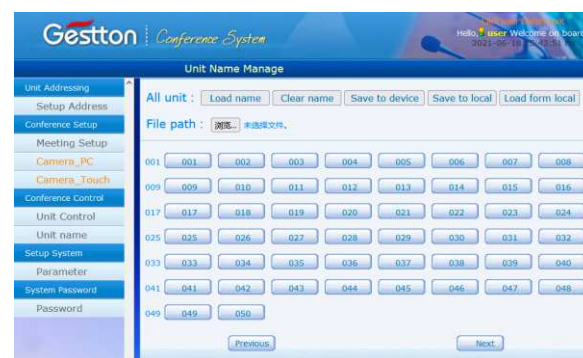
To lit the indicator on the microphone to assist operator to identify the unit on operation.

Unit control



UNIT CONTROL interface allows operator to check the real time status of each microphone unit connected to the system. Unit ID will indicate in green color when it is in use, clicking the unit ID can control the ON & OFF of corresponding unit.

Unit name



UNIT NAME interface allows operator to enter the name of attendee by clicking the unit ID, then click "Save to device" to save as default name list. When user leaved this section and come back to this page, name list will not display until clicking "Load name" to retrieve the default list.

Web management system



Setup system



SETUP SYSTEM interface allows operator to setup the time and IP address of the system, user should reboot the system after the new IP address applied.

System password



The name of administrator is fixed as admin, default password is 123456. Administrator can change password and add new user to the system, only administrator is authorized to make changes in this section.

General Specifications



Controller EG-6620M

Power supply	AC 110- 220V/ 50- 60Hz
Power consumption	200W
Units capacity	100 units
Frequency response	30Hz- 20KHz
SNR	90dB
Dynamic range	110dB
Harmonic distortion	<0.05%
Output impedance	XLR:2.2K , Line out:1K
Audio input	Tel in : -3dBV Line in : 6.5dBV
Audio output	Tel out : 15dBV Line out : 0dBV BAL out: -4dBV
Connector	MIC- RJ45 X 8 Tel. coupler- RCA X 2 Controller- RS-232 X 2 Video switch- RS-232 X 1 Camera- RS-232 X1, 12P Terminal block Audio input- RCA X 1 Audio output- XLR X 1, RCA X 1 PC- USB X 1 Audio recording- USB X 1 Ethernet- RJ45 X 1
Dimension	483 x 323 x 90mm
Weight	5.5kg
Color	Black

General Specifications



Microphone unit EG-6620C / EG-6620D

Power supply	DC 24V
Working current	60mA
Cartridge	Condenser
Pattern	Cardioid
Sensitivity	-50dB/Pa
Frequency response	100Hz- 12KHz
SNR	80dB
Dynamic range	95dB
Harmonic distortion	<0.1%
Input impedance	2.2K
Speaker	3W / 4Ω
MIC length	420mm
Connector	MIC- RJ45 X 1 Earphone- 3.5mm x 1
Dimension	193 x 145 x 65mm
Weight	0.95kg
Color	Black / Silver

General Specifications



Microphone unit EG-6621C / EG-6621D

Power supply	DC 24V
Working current	45mA
Cartridge	Condenser
Pattern	Cardioid
Sensitivity	-50dB/Pa
Frequency response	100Hz- 12KHz
SNR	80dB
Dynamic range	95dB
Harmonic distortion	<0.1%
Input impedance	2.2K
Speaker	NIL
MIC length	420mm
Connector	MIC- RJ45 X 1 Earphone- 3.5mm x 1
Dimension	268 x 48 x 65mm
Weight	0.95kg
Color	Black / Silver

The specifications are correct at the time of printing this manual.
For improvement purposes, all specifications for this unit, including
design and appearance, are subject to change without prior notice.