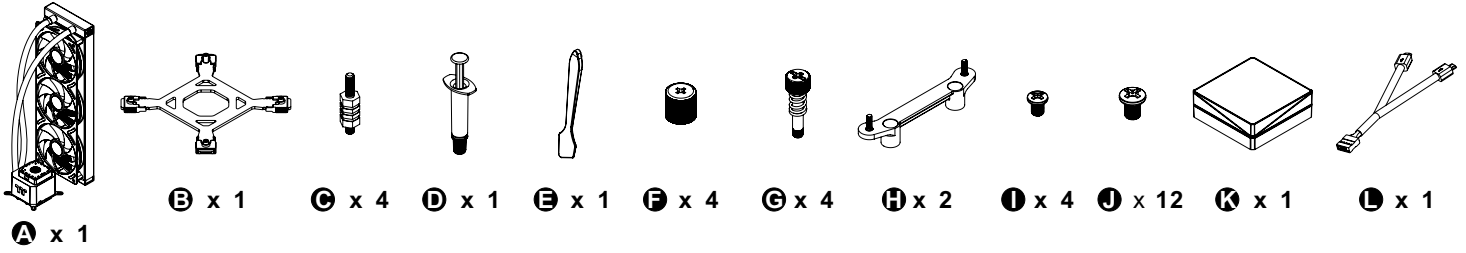
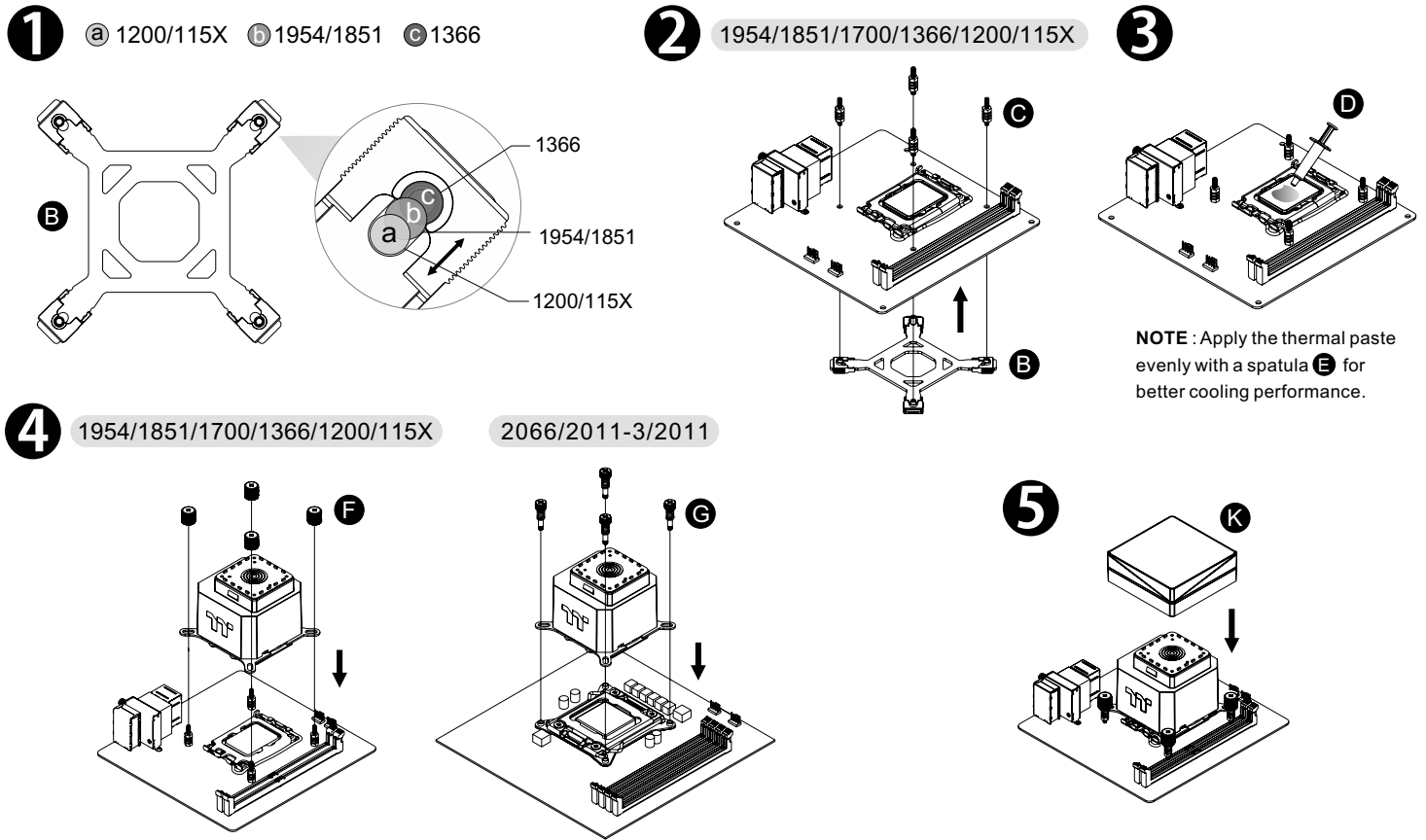




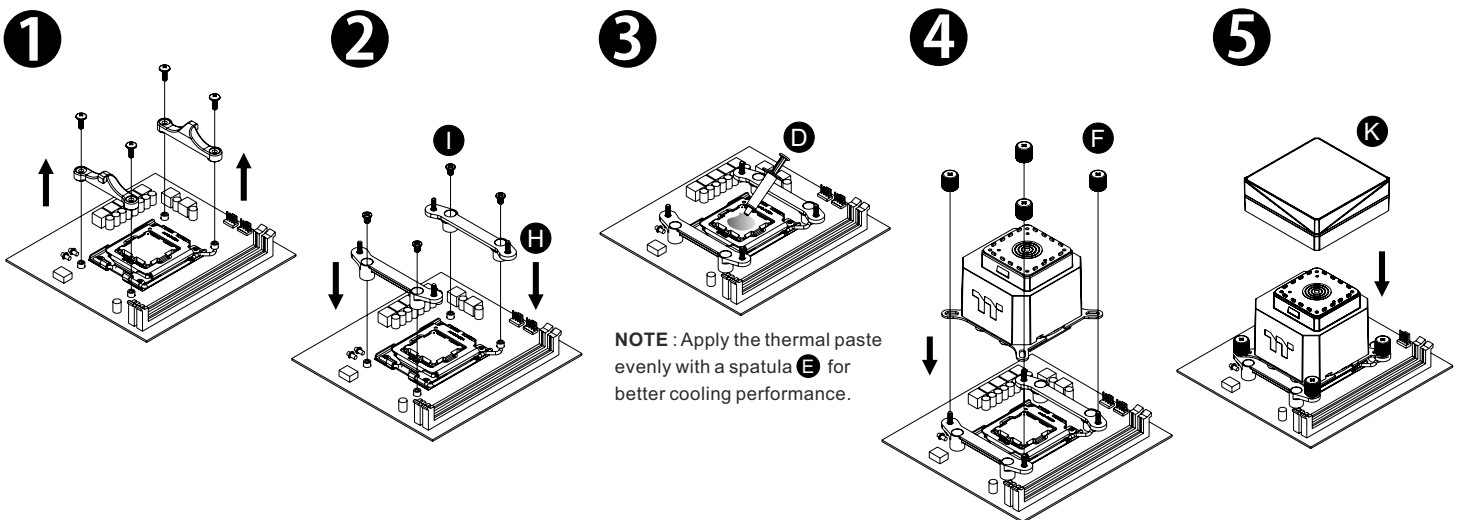
Parts List



Intel Installation Guide

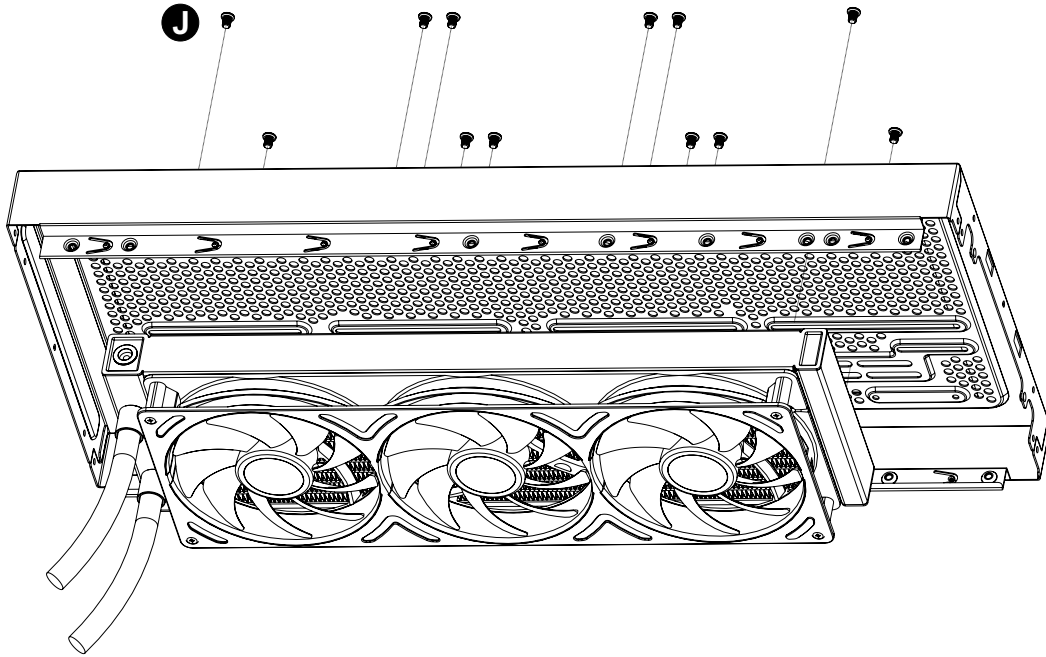


AMD Installation Guide

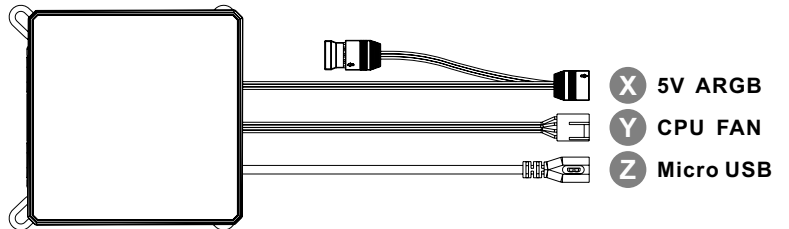
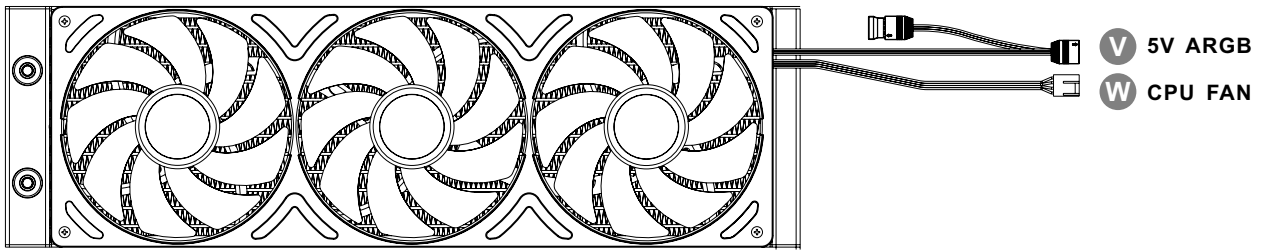


Installation Guide

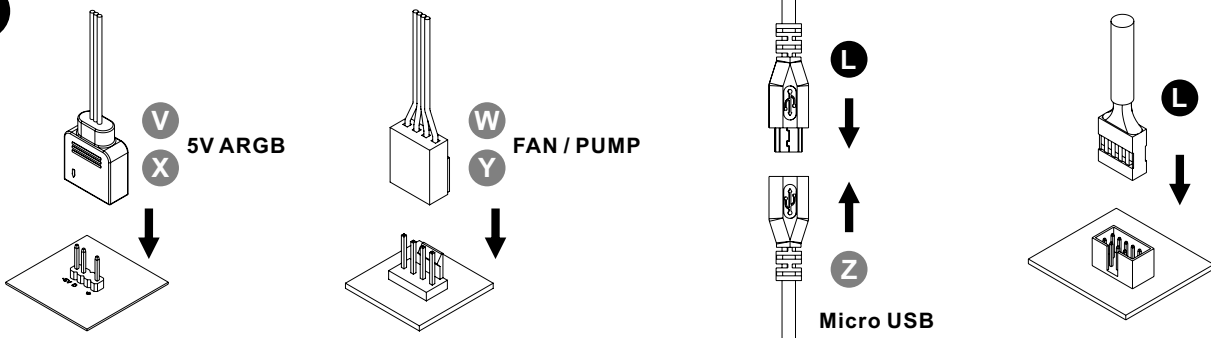
1



2



3



CAUTION

Please power off the PC and check the Positive and Negative ends on the connector before connecting the cable to motherboard. Connecting the wrong end can damage the fans.

CAUTION

To control the LCD display by TT RGB PLUS Software, Please connect the water block and motherboard with cable L.