

Model: GS1016EPS2

16-Port Gigabit Cloud Easy-Managed PoE+ Switch with 2 SFP



16 PoE+ Ports and 2 SFP Slots



200W Power Supply



L2 Management Features VLAN | QoS | Port Trunk

[Datasheet](#)



Highlights

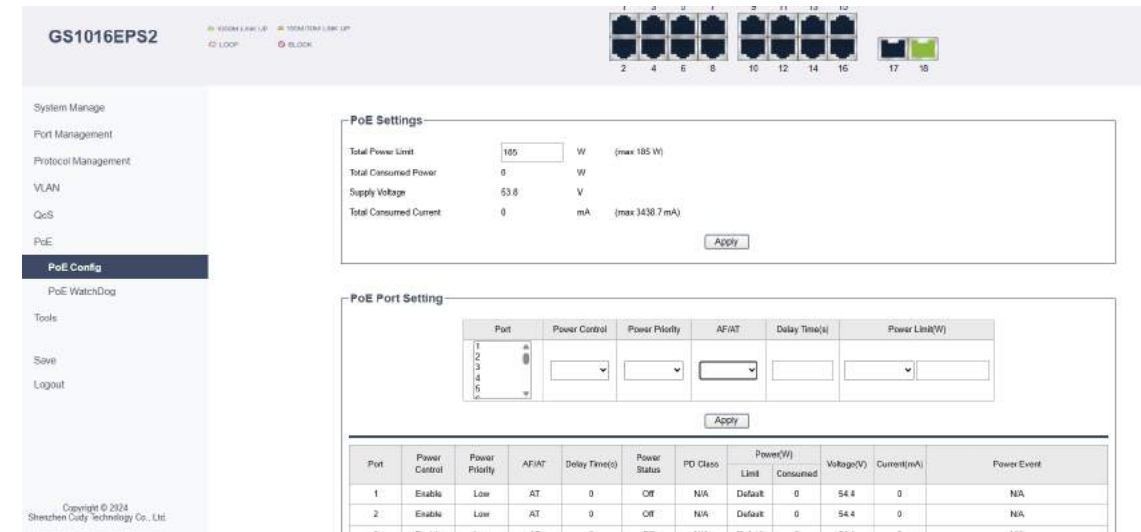
A cloud-managed rack-mounted 16-GbE, 2-SFP PoE switch with a 200W power supply and management features.

- 16x GbE with 802.3at/af Mode A PoE
- 2x 1.25G SFP
- 200W Power Supply
- PoE Max Status LED
- Per-Port PoE Management
- Web Management, SNMP
- VLAN (802.1Q/MTU/Port-Based)
- QoS (802.1p/DSCP/Port-Based)
- Port Mirror, Static Aggregation, etc
- Loop Prevention
- DHCP Snooping, IGMP Snooping
- 440x220x44 mm (17.32x8.66x1.73")

Package Content

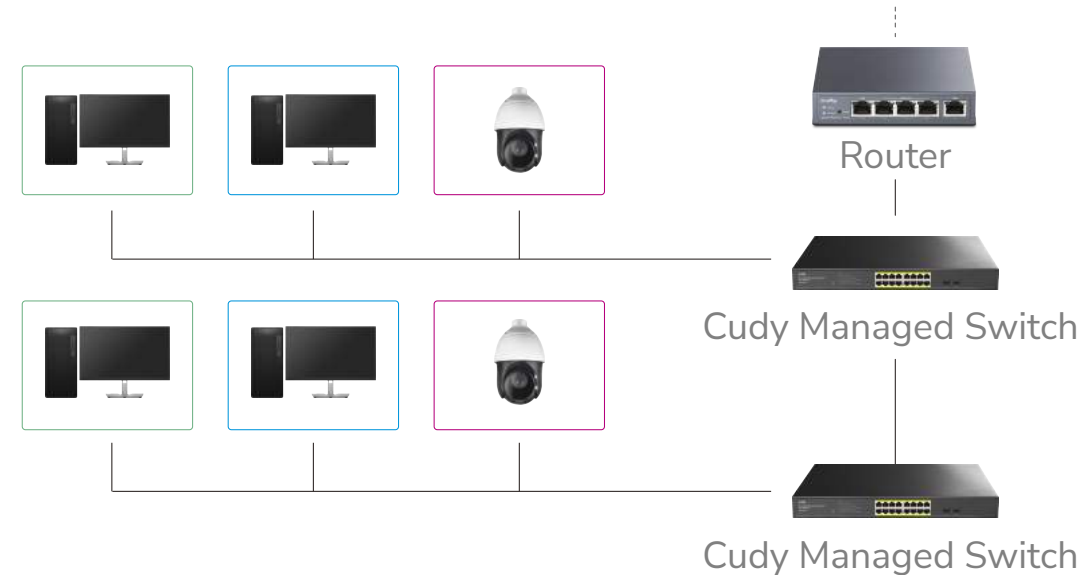
- GS1016EPS2
- Power Cord
- Installation Guide

Per-Port PoE Control



Configure PoE priority, set power limit for each port or the whole system, or customize the PoE watchdog (auto recovery) period. The panel gives you full control over the PoE management.

Create a Safe Network with VLAN



Specifications

Interfaces	1.25G SFP Slots	2	
	Gigabit RJ45 Ports	16	
	Gigabit RJ45 PoE Ports	#1~#16	
	Max Power on a Single PoE Port	30W	
	PoE Port Notes	The PoE ports comply with IEEE 802.3at/af standards.	
	Intelligent Power Management (PoE)	Automatically disconnect the lastly powered device when power exceeds budget.	
	Shielded RJ45 Port	True	
	Extend Mode Ports	Configurable	
	VLAN Mode Ports	Configurable	
	LED	Power	
		PoE Status of Each PoE Port	
		Link/ACT of Each Ethernet Port	
	Power Input	AC Inlet	
	Physical Buttons	Reset Button	
Watchdog Note	The PoE Watchdog will attempt to reboot the plugged-in clients that have been inactive for 5 minutes. Do not turn it on for clients with online auto-upgrade feature.		

Performance	Copper Speed and Distance	Cat. 3 or higher cable:
		100 meters at 10 Mbps
		Cat. 5 or higher cable:
		100 meters at 100 Mbps
		Cat. 5e or higher cable:
	100 meters at Gigabit	
	Cat. 5e or higher cable:	
	250 meters at 10 Mbps	
	Copper Speed and Distance Note	250-meter transmission is available when the port speed is set at 10 Mbps in the management system.
	Optical Spec and Distance	Depends on the Installed Optical Module
MAC Address Table	8192	
Max Switching Capacity	36 Gbps	
Max Forwarding Rate	26.78 Mpps	
Jumbo Frame	15 KB	
Packet Buffer	4 Mbit	
Power	Power Methods	AC
	AC	100-240V~, 50/60Hz
	Power Supply	200W
	Max Power Excluding PoE	14W



Specifications

Switching	802.3 Protocols	802.3x Flow Control
		802.3i 10BASE-T
		802.3u 100BASE-TX
		802.3ab 1000BASE-T
		802.3z 1000BASE-X
		802.3az Power Saving
		802.3af PoE/802.3at PoE
	802.1 Protocols	802.1d: STP*
		802.1w: RSTP*
		802.1p: LAN Layer 2 QoS/CoS
		802.1q: VLAN Bridge Operation
		802.1ab: LLDP/LLDP-MED
	Port Management	Port On/Off
		Port Negotiation Speed
		Port Trunk (Static Aggregation)
		Port Mirror
		Data Rate Limit
		Jumbo Frame Settings
		Storm Control
		Traffic Monitor
MAC Address Management		
EEE (802.3az)		

Switching	PoE Management	PoE Priority	
		PoE Watchdog On/Off	
		PoE Watchdog Period/Packet Threshold	
		PoE Consumed Power	
		PoE Standard	
		Delayed PoE Delivery	
		Total PoE Power Limit	
		PoE Power Limit	
		L2 Features	IGMP Snooping
			Loop Prevention
	DHCP Snooping		
	STP/RSTP*		
	LLDP Config and Neighbors		
	MTU VLAN		
	Port-Based VLAN		
	802.1Q VLAN		
	Voice VLAN*		
	DSCP QoS		
	802.1p QoS		
	Port-Based QoS		
Reliability	Grounding Methods		

* Requires customized firmware, contact Cudy sales for information.

Specifications

Reliability	EMS	IEC/EN 61000-4-2, Level 3 ESD: Contact: 6kV; Air: 8kV
		IEC/EN 61000-4-5, Level 4 Surge: Power: DM 2kV, CM 4kV; RJ45: CM 6kV
	Environment	Operating Temperature: 0~40 °C (32~104 °F) Storage Temperature: -40~70°C (-40~158 °F) Operating Humidity: 10~90% non-condensing Storage Humidity: 10~95% non-condensing
System	Control Methods	Config Web Page, Cudy App via Cudy Cloud SNMP V1/V2
	Firmware Upgrade	Local Upgrade
	Reliability	Backup and Restore
	Diagnostic Tools	Cable Status/Length Diagnosis Ping
	Languages	<ul style="list-style-type: none"> • English • Arabic • Bengali • Indonesian • German • Hindi • Spanish • Urdu • French • Traditional Chinese • Portuguese • Simplified Chinese • Russian

Mechanical	Dimension	440×220×44 mm 17.32×8.66×1.73 inches
	Casing Material	Metal
	Installation	Desktop Rackmount via Brackets
Ordering Information	Retail Package Dimension	487×307×84 mm 19.17×12.09×3.31 inches
	Units per Carton	5
	Carton Dimension	51×44.3×32.5 cm 20.08×17.44×12.8 inches