



PREMIUM AUDIO FOR AV CONFERENCING

PREMIUM AUDIO FOR AV CONFERENCING

MICROFLEX® ADVANCE™

WHY CHOOSE SHURE?

Shure is uniquely positioned as a leading audio equipment manufacturer serving corporate, education, government, broadcast/TV/film, and independent content creators. By choosing Shure, you will enjoy a range of benefits:

- + Nearly 100-year heritage of technical leadership in high-quality audio, acoustics, wireless, DSP, software, and audio networking technologies.
- + Broad product selection that can be customized to meet the needs of any user, space, or application – from simple to complex, small to large.
- + Compatibility and certification with leading software and hardware collaboration platforms; compliance with international regulatory standards.
- + Award-winning global support infrastructure.



AV conferencing has become an essential tool for communication. But it's easy to forget that the most important content is often carried by the audio, not the video. If the video fails, the meeting can go on; but if the audio fails, the meeting is over.

Poor audio inhibits productivity and fatigues meeting participants. Superior audio can transform your meetings from an exhausting struggle into a forum that supports creativity and productive teamwork.



ADVANTAGES

MXA902 INTEGRATED CONFERENCING CEILING ARRAY +



MXA901 CONFERENCING CEILING ARRAY +



MXA920 CEILING ARRAY +



+ MXA710 LINEAR ARRAY



+ MXA310 TABLE ARRAY



SUPERIOR PERFORMANCE. UNMATCHED AESTHETICS.

Since their introduction, Microflex® Advance™ Networked Array Microphones have been the premier choice for audio in the most challenging environments. They capture voice naturally, fit harmoniously with the room's appearance, and make it effortless to connect people for the world's leading enterprises. The industry-leading Microflex Advance microphones have revolutionized versatile and elegant AV conferencing solutions that discreetly and precisely capture every word.

ADVANTAGES

MXA ARRAY TECHNOLOGY

Microflex Advance networked array microphones rely on a suite of advanced technologies to deliver accurate audio in any environment.

PRECISE COVERAGE

Controlling which sounds are picked up is the foundation of good audio. The MXA901 and MXA902 feature Automatic Coverage™ technology. The MXA 710 and MXA310 feature Steerable Coverage™ technology. The MXA920 includes both Automatic and Steerable Coverage technology.

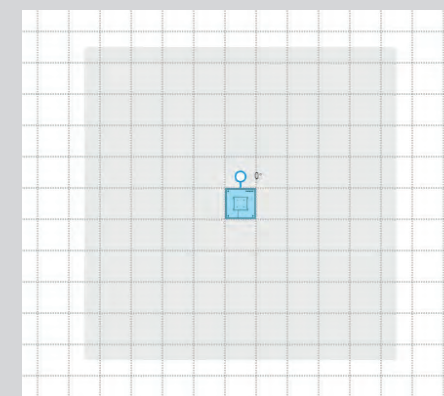
POWERFUL DSP

Digital signal processing blends microphone signals into a harmonious mix. The MXA920, MXA902, MXA901, and MXA710 feature IntelliMix DSP that controls levels and eliminates noise and echo. The MXA310 includes automatic mixing and per-channel EQ for improved clarity.

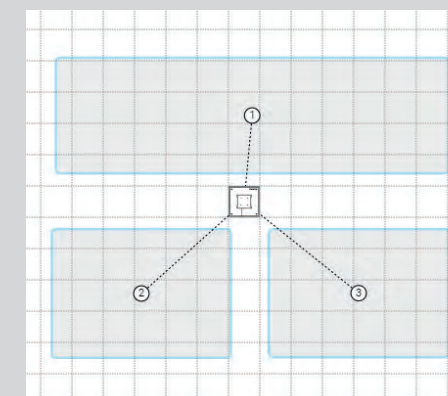
FLEXIBLE NETWORKING

Digital audio, power, and control data use Dante or AES67 to coexist on the same network as enterprise applications. Command strings enable integration with third-party systems for camera tracking or room control.

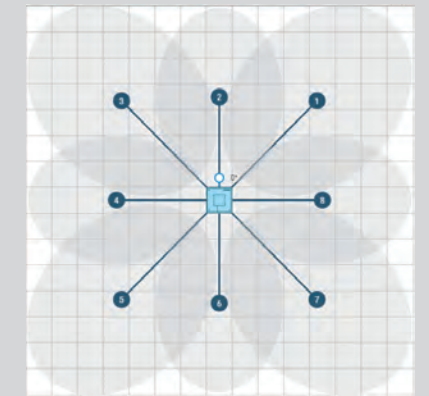
Single-Zone Automatic Coverage™ technology captures everyone within a defined seating area and provides a single audio output mix.



Multi-Zone Automatic Coverage™ technology allows you to define up to 8 distinct coverage zones, like seating areas, a podium, and white board, and provides a single audio output mix.



Steerable Coverage™ technology lets you configure up to 8 pickup lobes with individual audio outputs. This is ideal for applications like voice lift that require multiple microphone and loudspeaker zones.



Certified for
Microsoft Teams



CEILING ARRAY MICROPHONE



+ MXA920 CEILING ARRAY MICROPHONE

NOW, PRISTINE AUDIO IS AUTOMATIC.

The MXA920 is the premier ceiling array microphone for contemporary meeting spaces. Multi-zone Automatic Coverage™ technology covers up to a 30 x 30 ft (9 x 9 m) area automatically, or place coverage in specific areas for more precise control of audio capture. With next generation array architecture for enhanced directional pickup and more natural speech, the MXA920 is even easier to use and faster to deploy than the MXA910 for AV conferencing, camera tracking, voice lift, or sound reinforcement.

COVERAGE WHERE YOU WANT IT

Multi-zone Automatic Coverage™ technology captures up to a 30 x 30 foot (9 x 9 m) area automatically for great sound out of the box.

You can also place coverage areas in specific locations to limit audio capture to seating areas, a podium, or whiteboard.

SEAMLESS INTEGRATION

Next-generation array architecture delivers more directional pickup at low frequencies for more natural sounding voice.

Onboard IntelliMix DSP with automatic mixing, echo cancellation, noise reduction, and automatic gain control provides a pristine audio mix.

FITS YOUR ROOM DESIGN

Square or round form factors suit your interior design. Choose white, black, or aluminum finish (square available in white only), or paint to match room aesthetics.

Versatile hardware options support in-ceiling, on-ceiling, pole, or wire-rope mounting.

READY FOR ANYTHING

Camera Tracking
Precise talker localization reports the position of simultaneous talkers for more accurate camera tracking.

Voice Lift
Highly directional pickup allows audience members across the room to interact without the need for roving microphones.

Sound Reinforcement
Precise coverage control enables presenters to be amplified without lavalier or gooseneck microphones.



CEILING ARRAY MICROPHONE

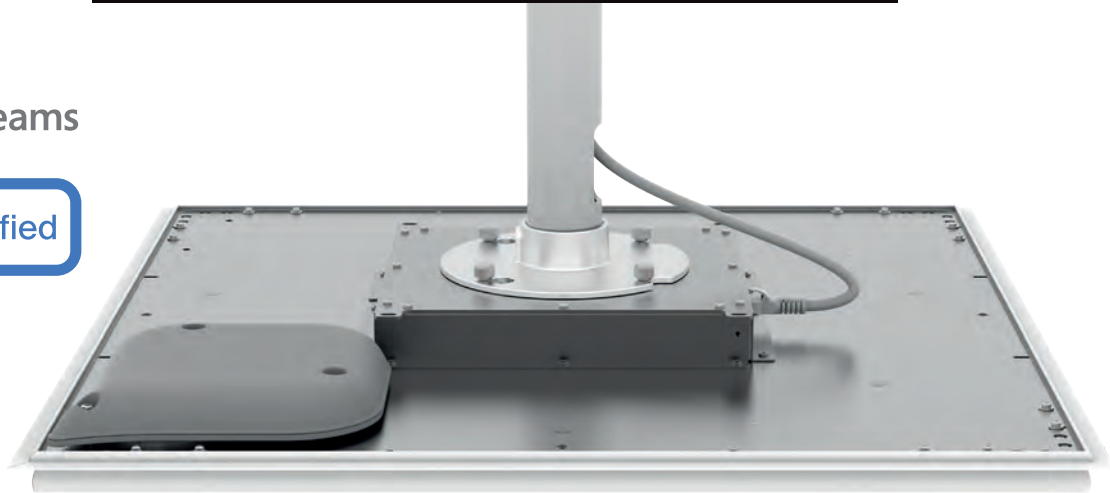
AVAILABLE MODELS	
MXA920AL-R	Round Ceiling Array Microphone, 25-inch (aluminum)
MXA920B-R	Round Ceiling Array Microphone, 25-inch (black)
MXA920W-R	Round Ceiling Array Microphone, 25-inch (white)
MXA920W-S	Square Ceiling Array Microphone, 24-inch (white)
MXA920W-S-60CM	Square Ceiling Array Microphone, 60 cm (white)

ACCESSORIES	
MXA-MUTE Network Mute Button	Touch-sensitive mute button with programmable switch and LED can control one or multiple MXA microphones or DSP units
A900-PM Pole Mounting Kit	Allows MXA902/920 microphones to be suspended using threaded rod or NPT pole
A900-GM Gripple Mounting Kit	Allows MXA902/920 microphones to be suspended from the ceiling using Gripple fittings
A910-HCM Hard Ceiling Mount	Allows MXA902/MXA920-S to be mounted flush in a hard or drywall ceiling
A910-JB Junction Box Adapter	Allows MXA902/MXA920-S to be connected to wiring in electrical conduit

INTEGRATED CONFERENCING CEILING ARRAY

Certified for
Microsoft Teams

zoom Certified



+ MXA902 INTEGRATED CONFERENCING CEILING ARRAY

THE FASTEST WAY TO BETTER SOUND.

The MXA902 is the first integrated ceiling array and loudspeaker for AV conferencing. It delivers premium audio capture and reproduction in small to medium-sized meeting spaces – with just one device. The MXA902 combines an advanced array microphone with an integrated loudspeaker for natural sounding speech reproduction. Single-Zone Automatic Coverage™ technology captures every participant, a wide-dispersion loudspeaker delivers robust sound throughout the room, and onboard IntelliMix® DSP ensures echo- and noise-free audio.

ADVANCED ARRAY MICROPHONE

Single-Zone Automatic Coverage technology captures every talker in a 20 x 20 foot (6 x 6 m) area automatically with no configuration required.

Next-generation array architecture provides full-range speech capture and consistent directional performance even at lower frequencies.

INTEGRATED LOUDSPEAKER

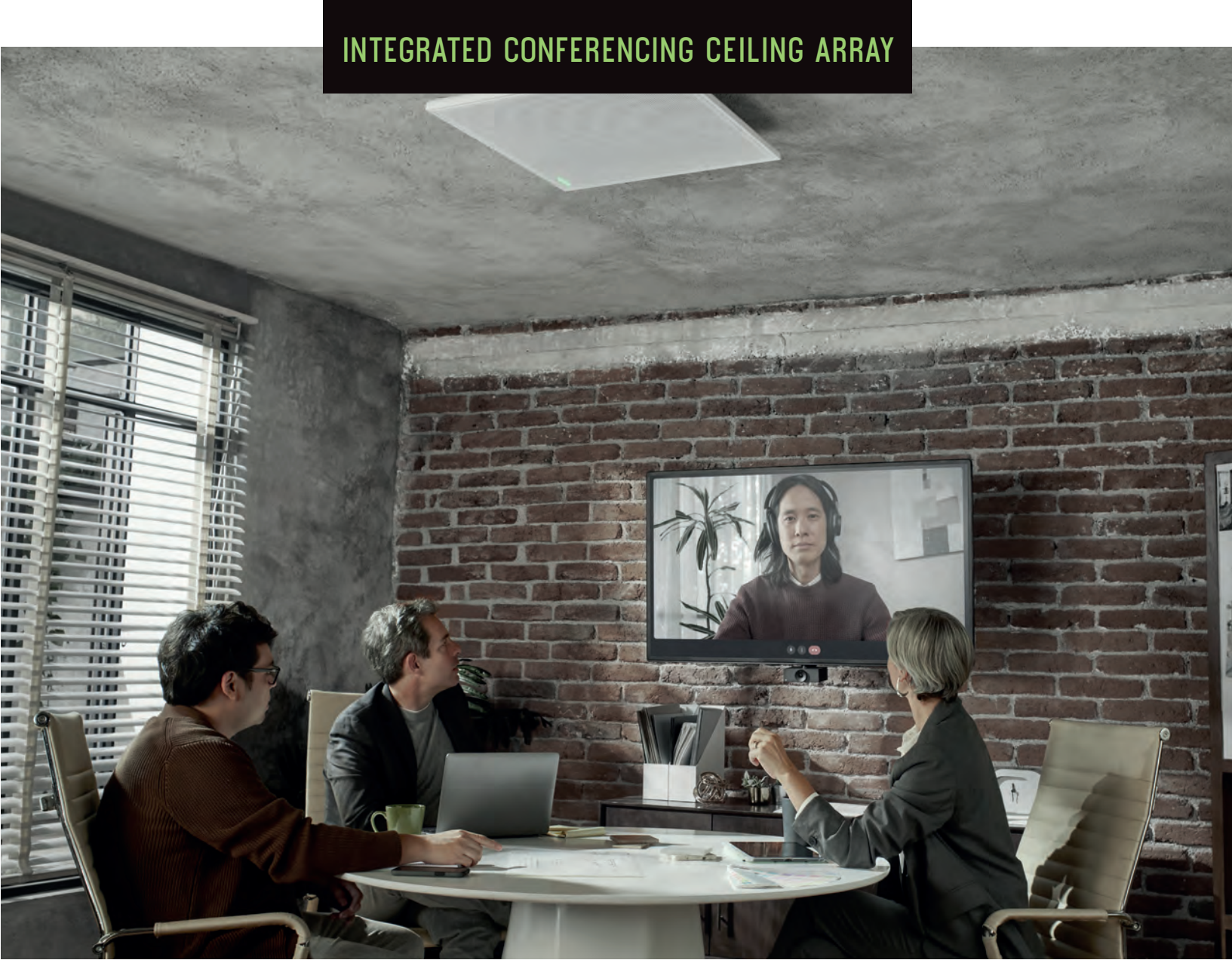
Wide-dispersion loudspeaker delivers clear, robust far-site audio that fills the room.

With just PoE+ power it generates up to 86 dB SPL with no additional amplification required.

INTELLIMIX DSP

Industry-leading automatic mixing, acoustic echo cancellation, noise reduction, automatic gain control, and EQ provide an automix output with outstanding speech clarity.

The loudspeaker signal is automatically assigned as the AEC reference so no additional signal routing is necessary.



INTEGRATED CONFERENCING CEILING ARRAY

FITS YOUR ROOM DESIGN

Add MXA-MUTE buttons for convenient audio muting or use your room control system.

Compatible with the A900 family of mounting hardware options to support in-ceiling, on-ceiling, pole, or wire-rope mounting.

White finish is paintable to match your room aesthetics.

AVAILABLE MODELS

- MXA902W-S Square Integrated Conferencing Array, 24-inch (white)
- MXA902W-S-60CM Square Integrated Conferencing Array, 60 cm (white)

ACCESSORIES

MXA-MUTE Network Mute Button	Touch-sensitive mute button with programmable switch and LED can control one or multiple MXA microphones or DSP units
A900-CM Ceiling Mount	Allows MXA902/920 ceiling array microphones to be attached directly to the ceiling
A900-PM Pole Mounting Kit	Allows MXA902/920 microphones to be suspended using threaded rod or NPT pole
A900-GM Gripple Mounting Kit	Allows MXA902/920 microphones to be suspended from the ceiling using Gripple fittings
A910-HCM Hard Ceiling Mount	Allows MXA902/MXA920-S to be mounted flush in a hard or drywall ceiling
A910-JB Junction Box Adapter	Allows MXA902/MXA920-S to be connected to wiring in electrical conduit

CONFERENCEING CEILING ARRAY MICROPHONE

Certified for
Microsoft Teams

zoom Certified



+ MXA901 CONFERENCEING CEILING ARRAY MICROPHONE

A SLEEKER TAKE ON TECH.

The Microflex Advance MXA901 Conferenceing Ceiling Array Microphone is the most discreet approach to AV conferenceing audio for meeting rooms. Its compact and stylish 13.5-in diameter (34 cm) form factor complements any interior design without drawing attention. With Single-Zone Automatic Coverage technology and advanced IntelliMix DSP, the MXA901 captures multiple talkers at once for more dynamic interaction without annoying echo or room noise. One MXA901 can cover a small or medium-size room; multiple MXA901's can be combined to cover larger spaces with the IntelliMix P300 audio processor or IntelliMix Room software.

COVER EVERYONE

Single-Zone Automatic Coverage technology automatically captures every talker in a 20 by 20 foot (6 by 6 m) area with no configuration required.

Use one MXA901 in small or medium-size rooms or use multiple MXA901's to cover larger spaces.

CANCEL THE CLUTTER

Industry-leading IntelliMix® DSP automatically aims microphone coverage at talkers and removes echo and room noise.

Automatic gain control adjusts in-room talker levels so that everyone is heard clearly.

SCALE IT UP

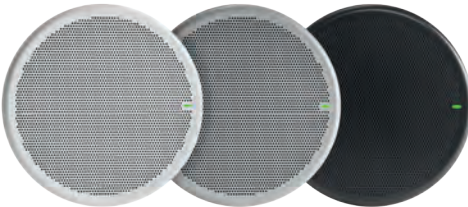
Add the IntelliMix P300 or IntelliMix Room DSP to connect multiple MXA901's to a room computer or video codec.

Add MXA-MUTE buttons for convenient audio muting from the table or use your room control system.

FITS YOUR ROOM DESIGN

On-ceiling mounting bracket included; versatile options for in-ceiling, pole, rod, or suspension mounting available.

Choose from white, black, or aluminum finishes to match your color scheme.



CONFERENCEING CEILING ARRAY MICROPHONE



AVAILABLE MODELS

- MXA901AL-R Aluminum ceiling microphone with on-ceiling mount
- MXA901B-R Black ceiling microphone with on-ceiling mount
- MXA901W-R White ceiling microphone with on-ceiling mount

ACCESSORIES

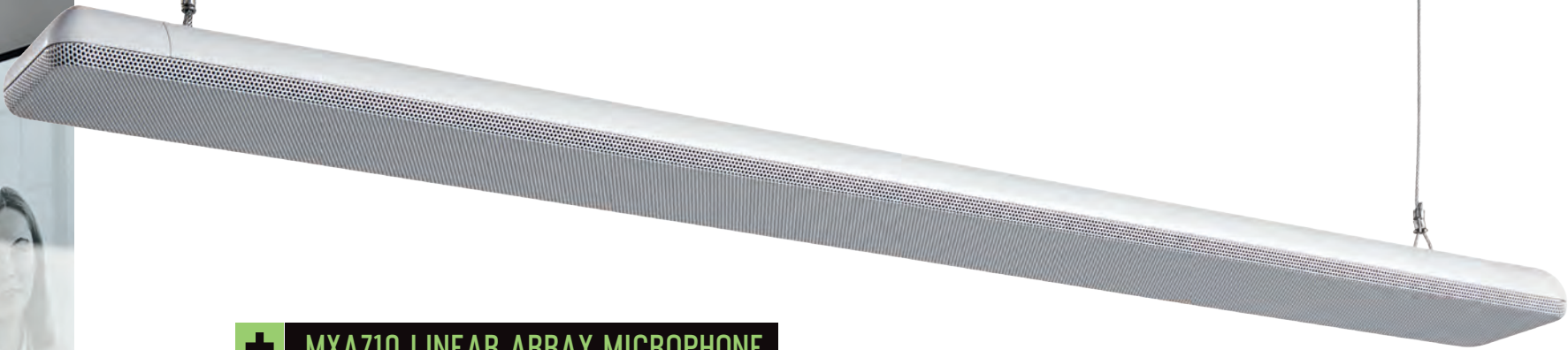
A901-R-GM Gripple Suspension Mount Kit	Allows MXA901-R to be suspended using wire rope
A901-R-HCM Hard Ceiling Mount	Allows MXA901-R to be flush mounted in a drywall or hard ceiling
A901-R-PM Pole Mount Kit	Mounts MXA901-R to a threaded rod or NPT pole (not included)
A901-R-TB Tile Bridge	Mounts MXA901-R in a drop ceiling



LINEAR ARRAY MICROPHONE

Certified for
Microsoft Teams

LINEAR ARRAY MICROPHONE



+ MXA710 LINEAR ARRAY MICROPHONE

THE SLIM ALTERNATIVE WHERE SPACE IS LIMITED.

The MXA710’s sleek, linear form factor allows for placement virtually anywhere in a meeting space — on a ceiling or wall, around a display, or recessed into the table. Steerable Coverage™ technology allows pickup lobes to be easily adjusted to capture talkers around the room. Available in two lengths and three colors to suit different interior designs and mounting configurations. Onboard IntelliMix DSP provides all the signal processing needed for echo- and noise-free audio.

COVERAGE WHERE YOU WANT IT

Steerable Coverage technology allows you to configure 4 or 8 pickup lobes that can be easily adjusted to capture talkers around the room.

SEAMLESS INTEGRATION

Onboard IntelliMix DSP with automatic mixing, echo cancellation, noise reduction, and automatic gain control provides a pristine audio mix.

Programming-free LED mute sync with popular software codecs when connected to IntelliMix P300, IntelliMix Room or ANIUSB-MATRIX.

FITS YOUR ROOM DESIGN

Sleek linear form factor allows for placement virtually anywhere — on the ceiling or wall, around a display, or recessed into the table.

Choose white, black, or aluminum finish. Wall mounting bracket included; other mounting options available.

AVAILABLE MODELS

MXA710-2FT	Linear Array Microphone, 2 foot / 60 cm (aluminum, black, white)	MXA710-4FT	Linear Array Microphone, 4 foot / 120 cm (aluminum, black, white)
------------	--	------------	---

ACCESSORIES

MXA-MUTE Network Mute Button	Touch-sensitive mute button with programmable switch and LED can control one or multiple MXA microphones or DSP units
A710-TB Tile Bridge Ceiling and Suspension Mount Kit	Mounts MXA710 directly to ceiling tiles or suspended from ceiling grids; use one for MXA710-2FT or two for MXA710-4FT
A710-FM Flush Mount	Mounts MXA710 flush within a table, wall or hard ceiling surface
A710-DS Desk Stand	Mounts MXA710 to desk, credenza, or table
A710-MSA Mic Stand Adapter	Mounts MXA710 to any microphone stand in horizontal or vertical orientation

TABLE ARRAY MICROPHONE

TABLE ARRAY MICROPHONE



+ MXA310 TABLE ARRAY MICROPHONE

PREMIUM SOUND WITHIN YOUR REACH.

The MXA310 is the ideal solution when great sound needs to be close at hand. Steerable Coverage™ technology allows up to four separate polar patterns to be easily adjusted to capture multiple talkers around the table. A unique toroid polar pattern rejects overhead noise while picking up talkers all around the table. Built-in Shure DSP utilities optimize voice quality, integrated mute buttons place controls within easy reach.

COVERAGE WHERE YOU WANT IT

Steerable Coverage technology allows you to configure 4 polar patterns to capture talkers around the table.

Unique toroid pattern picks up a 360-degree circle but rejects sound from overhead noise.

NATURAL SOUND

Integrated automix output improves clarity by activating only mics being addressed.

Per-channel parametric EQ reduces noise pickup in rooms with poor acoustics.

FITS YOUR ROOM DESIGN

Programmable touch-sensitive mute buttons can control one mic, all mics, or external devices.

Discreet design with side or bottom cable exit installs on top of table or flush-mounted.

AVAILABLE MODELS

MXA310AL	Table Array Microphone (aluminum)
MXA310B	Table Array Microphone (black)
MXA310W	Table Array Microphone (white)

ACCESSORIES

A310-FM	Flush Mount
---------	-------------



zoom Certified

Certified for Microsoft Teams

SOFTWARE



+ DESIGNER SYSTEM CONFIGURATION SOFTWARE

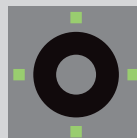
ENABLE NEXT GENERATION AUDIO.

Design, deploy and commission installations consisting of Microflex® Ecosystem components with this free software. Save time, improve efficiency, and share room configurations seamlessly.



INTUITIVE WORKFLOW

Designer 6 allows online and offline design, routing, configuration, and push to online devices, all in one tool.



SEE CLEARLY

An improved view of audio routing and coverage areas provides complete system awareness.



PASS IT ON

Simplified file management and Windows and Mac OS compatibility make it easy to save and share room configurations.



CONFIDENT CONNECTIONS

802.1x protocol and additional features support enhanced network security.

SOFTWARE



+ SYSTEM API

CONQUER COMPLEXITY AND SCALE.

Control & monitor a wide variety of features and parameters for Shure devices – whether on premises or remotely. Open architecture allows integration with 3rd party devices and platforms to enable comprehensive and customizable system management.



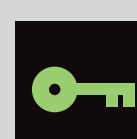
RESTFUL API

Highly scalable and interactive with other control and monitoring systems that are already in use across enterprise applications.



STREAMLINED SET-UP

Ease & speed of install enables savings on deployment efforts, time on-premises, and resources.



ENHANCED NETWORK SECURITY

Features including HTTPS, 802.1x, and SRP ensure robust network security protocols across an enterprise.

INTEGRATION



INTEGRATION

BETTER TOGETHER.

Shure networked audio interfaces, processors, and software integrate with Microflex Advance microphones to provide a powerful conferencing solution that works with your favorite hardware or software collaboration platform.



1 MXA Microphone
+
Room PC or
Hardware Codec



Use ANIUSB-MATRIX Audio Network Interface

The ANIUSB-MATRIX connects the output of a Microflex Advance microphone to a room computer via USB or to a hardware video codec via Dante or analog I/O. The built-in matrix mixer allows you to route additional audio sources to any output.

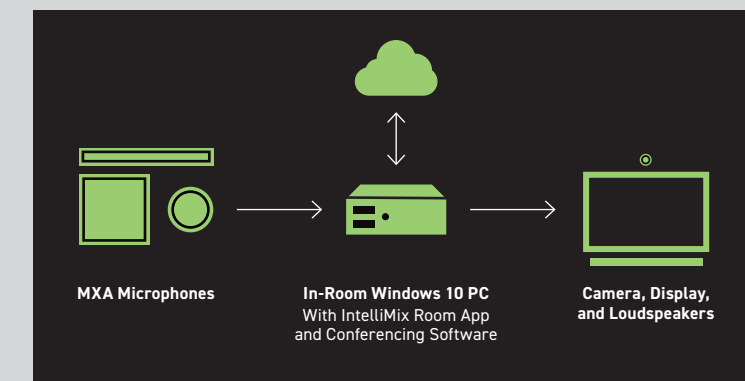
Multiple MXA Microphones
+
Room PC or
Hardware Codec



Use IntelliMix P300 Audio Conferencing Processor

The P300 connects the automix outputs from multiple MXA microphones to a room computer via USB or to a hardware video codec via Dante or analog I/O. Built-in IntelliMix DSP selects the best microphone for each talker and applies acoustic echo cancellation and noise reduction for a pristine audio mix.

Multiple MXA Microphones
+
Windows 10/11 Room PC



Use IntelliMixRoom Audio Processing Software

IntelliMix Room puts IntelliMix DSP on the same Windows 10 device that runs your collaboration application or software codec. It accommodates multiple MXA microphones and provides automatic mixing, echo cancellation, noise reduction with Denoiser, and more for each individual microphone channel.

INTEGRATION

+ MXN5W-C NETWORKED CEILING LOUDSPEAKER

The MXN5W-C Networked Ceiling Loudspeaker provides high-quality speech reproduction for AV conferencing applications without the need for a separate amplifier or an outboard DSP. The PoE-powered MXN5 is the ideal loudspeaker solution when used as part of a Shure networked conferencing audio system. Combined with Microflex Advance Array Microphones and IntelliMix® DSP, the full Shure networked systems ecosystem delivers premium audio performance with unmatched ease of deployment, with the added confidence of Shure Audio Encryption and Dante Domain Manager compatibility.



INTEGRATION

+ MXA NETWORK MUTE BUTTON

The MXA Network Mute Button is a configurable PoE-powered mute button accessory designed for Shure networked audio products, including Microflex® Advance™ Array Microphones as well as the IntelliMix® P300 and IntelliMix Room DSPs, and ANIUSB-MATRIX. One or many of the low-profile touch sensitive mute buttons can be configured to mute one or multiple microphones, depending on user needs or room configurations.

Features

- Designer System Configuration software for easy setup and configuration
- PoE powered
- Compatible with third party control systems via programmable control strings
- LED status ring with configurable colors and brightness
- Configurable as toggle, push to talk and push to mute functionality
- IP1X rated
- Easy table installation in 1" (25mm) or 7/8" (22mm) holes



APPLICATION FLEXIBILITY

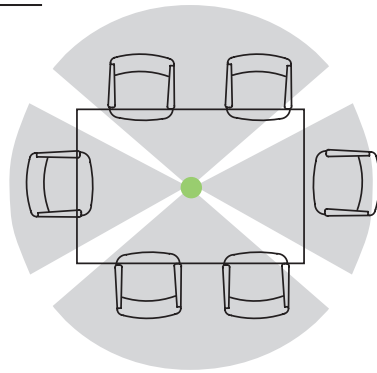
Match single or multiple arrays to the AV conferencing needs of rooms of any size, configuration or activity: formal presentations, intimate discussions, distance learning or collaborative work.

TABLE ARRAY COVERAGE MAPS

Small Rectangular Table 1 Table Array

Profile
6 Chairs
1 Rectangular Table

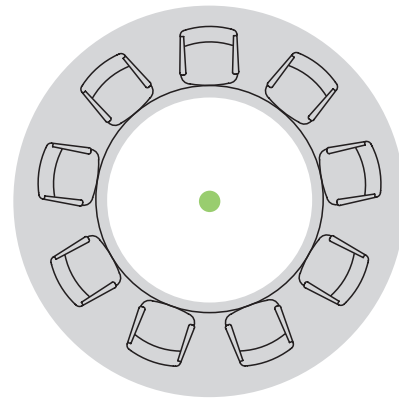
1 Bi-Directional Pattern
2 Cardioid Patterns



Medium Round Table
1 Table Array

Profile
9 Chairs
1 Round Table

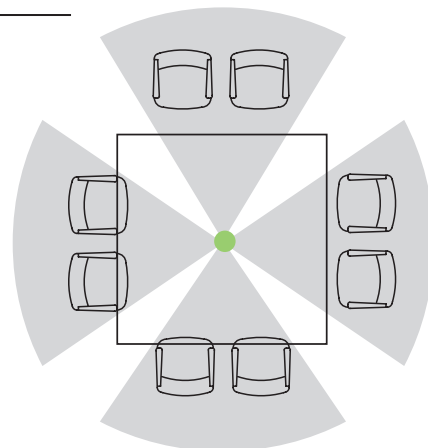
1 Toroid Pattern



Square Table
1 Table Array

Profile
8 Chairs
1 Square Table

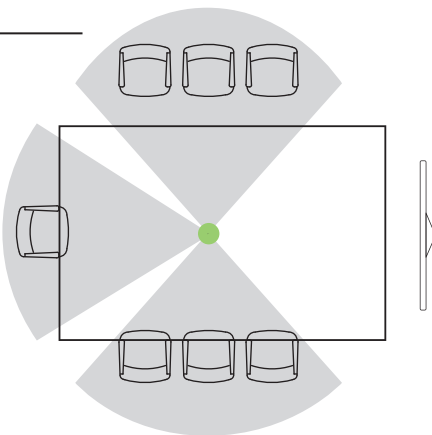
4 Supercardioid Patterns



Rectangular Table 1 Table Array

Profile
7 Chairs
1 Rectangular Table

- 1 Supercardioid Pattern
- 2 Cardioid Patterns



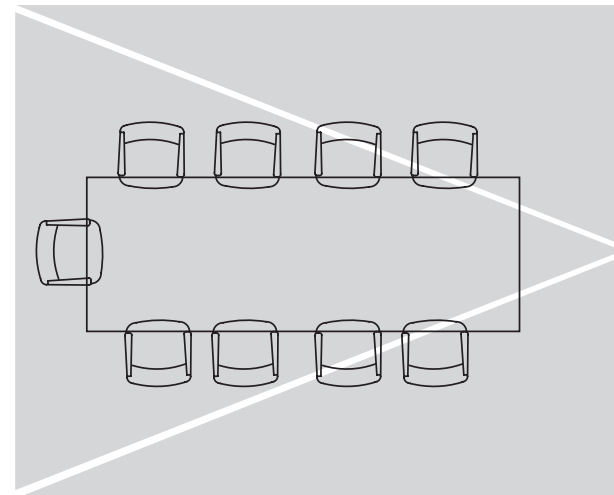
+ LINEAR ARRAY COVERAGE MAPS

Small Rectangular Table

MXA710-2FT
Coverage Distance: Up to 16 ft
Channels used: 3 of 4
Mic Coverage: Default

Horizontal Wall Installation

Profile
9 Chairs
1 Rectangular Table

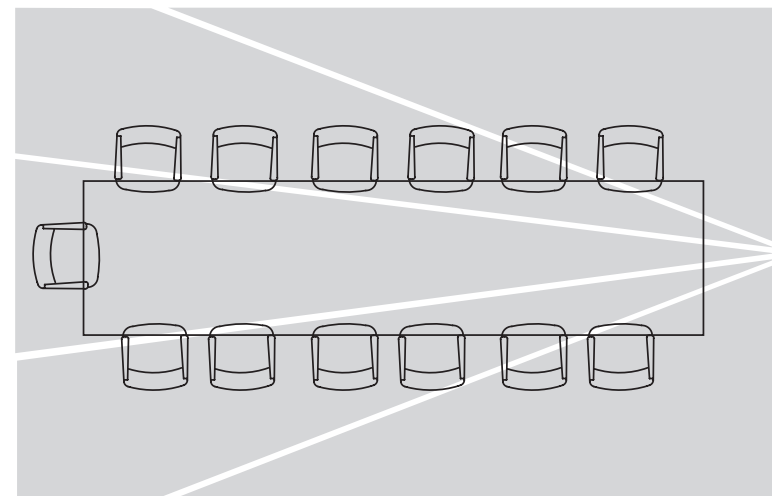


Large Rectangular Table MXA710-4FT

Coverage Distance: Up to 20 ft
Channels used: 5 of 8
Mic Coverage: Custom/Optimized

Horizontal Wall Installation

Profile
13 Chairs
1 Rectangular Table



+ MXA901 CEILING ARRAY MICROPHONE COVERAGE MAPS

+

Small Conference Room

1 MXA901 Ceiling Array Microphone

Profile

6 Chairs

1 Square Table

1 Coverage Area

+

Large Conference Room

2 MXA901 Ceiling Array Microphones

Profile

28 Chairs

1 Rectangular Table

2 Coverage Areas

+ MXA902 INTEGRATED CONFERENCING CEILING ARRAY COVERAGE MAPS

+

Small Conference Room

1 MXA902 Ceiling Array

Profile

6 Chairs

1 Square Table

1 Coverage Area

+

Medium Conference Room

1 MXA902 Ceiling Array

Profile

10 Chairs

1 Rectangular Table

1 Coverage Area

+ MXA920 CEILING ARRAY COVERAGE MAPS *

+

Large Conference Room

2 MXA920 Ceiling Arrays

Profile

28 Chairs

1 Rectangular Table

2 Coverage Areas

+

Medium Conference Room

1 MXA920 Ceiling Array

Profile

14 Chairs

1 Rectangular Table

1 Coverage Area

+

Videoconference Room

1 MXA920 Ceiling Array

Profile

21 Chairs

3 Rectangular Tables

3 Coverage Areas

+

Classroom / Presentation Room

1 MXA920 Ceiling Array

Profile

16 Chairs

4 Rectangular Tables

5 Coverage Areas

* Coverage Capabilities
Installed at a height of 3 meters (ten feet), Ceiling Arrays capture audio from seated participants to a recommended area of 9 meters (30 feet) in diameter, meeting the STIPA "A" intelligibility rating.

** Note:
Ceiling Arrays are capable of picking up participants beyond 9 meters (30 feet).

** Room conditions:
RT60 (reverb time)
= 500 ms @ 1kHz, weighted room noise
= 40dBSPL(A). IEC-602682-16.

MXA310 TABLE ARRAY MOUNTING OPTIONS

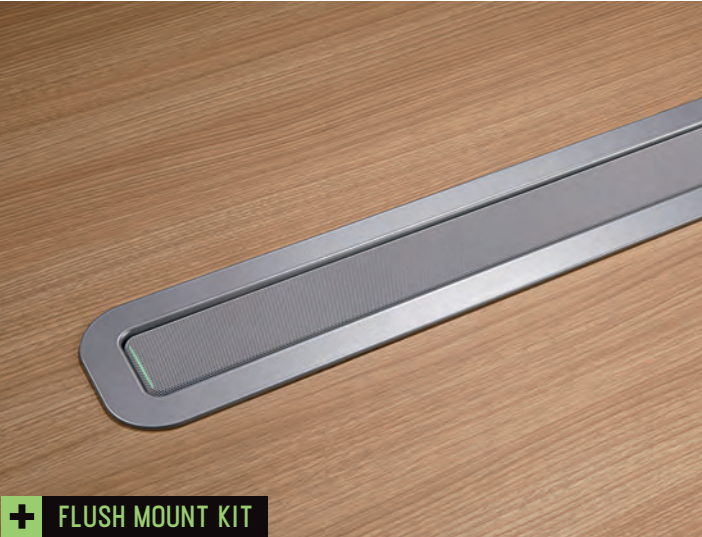
+ TABLE ARRAY MOUNTING KIT (INCLUDED)

Cable management solutions for on-the-table or through-the-table applications; includes mounting tube/wingnut.
MXA310 retrofits existing Shure table mounted MX395, MX396, MX392 boundary microphones.

Allows MXA310 Table Array to be mounted flush in the table; includes rubber isolation to prevent mechanical vibrations.
Available in black and aluminum finishes; paintable to match table surface.



MXA710 LINEAR ARRAY MOUNTING OPTIONS



CEILING ARRAY MOUNTING OPTIONS

A variety of mounting accessories are available to suit different ceiling types.

